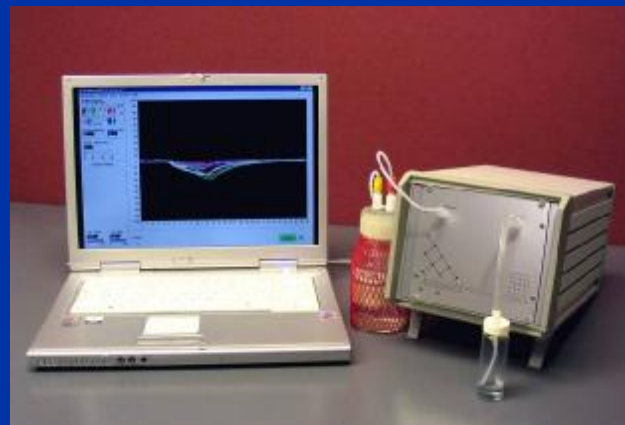


Scensive's new electronic nose, Bloodhound® ST306 is housed in a high quality case, with front mounted sample and reference ports, upgraded software and hardware.

The instrument is PC driven and simple to use, data analysis software included, can be used for direct analysis of odour samples with minimal sample preparation.

Instruments are supplied with sensor arrays suitable for general research or selected to be application specific.



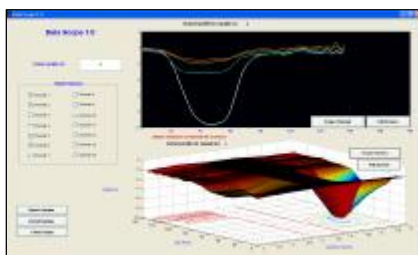
Bloodhound® ST306 : Instrument Details

The ST306 instrument links to a standard PC. The application software allows the user to fully specify sampling parameters (sample sniff, reference odour, hold, exhale, flush, etc.) and then automatically controls the 'sniff' procedure, records and manages the output data resulting.

All of the operational variables can be controlled using a sophisticated graphical user interface. The output graphics enable the user to compare the resulting odour profile with previously prepared master profiles held in a library.

The user can decide to gather, analyse and export data from all or only some of the sensors, depending on the complexity of the odour being studied.

The Bloodhound® ST306 uses 6 sensors produced from a variety of materials and this creates an instrument which is responsive to a wide range of odours. For specific applications, fewer (or custom) sensors may be needed and Scensive can select or design sensor materials to increase detection, qualitative and quantitative responses.



The response to a particular smell depends on the sensor type and the repeatability of that response is very high. Here are shown the responses from 6 sensors to a 5 second pulse of volatiles, the total time trace is 30 seconds.



The latest Bloodhound® ST306 software includes the facility to record odour maps. Analyse samples and compare then with existing known odour profiles and discriminate between odours.

Features

- Low cost of ownership
- Easy to use
- Flexible protocols
- Rapid set-up and sampling
- Suitable for a wide range of applications
- No elaborate sample preparation
- Links to standard PC
- Portable and robust
- Auto-sampler compatible
- Rack mounting compatible

Specifications

- Sensors : 6
- Type : Conducting polymer (or similar)
- Sensitivity : ppm to ppb levels
- Range : All odour types
- Sample Time : 20 to 60 seconds
- Control : PC driven s/w
- PC spec : MS Windows 2000, XP
- Data Analysis : Provided (or data export)
- Data port : USB2
- Dimensions : 18cm x 18cm x 32cm
- Weight : 2.4kg
- Power : 12v DC (110-220v AC converter)